



Louth English



Learn English
and Speak to
the World!

2023 – 2024
Courses & Fees
louthenglish.ie



TABLE OF CONTENTS

Full-time English Courses	3
General English Evening Classes	4
Academic English Evening Classes..	5
Business English Evening Classes ...	6
One-to-One English Lessons	7
Cambridge Assessment Admissions Testing	8
IELTS Preparation Course	9
OET Preparation Course	10
Cambridge English Preparation Course	11
One-to-One Exam Preparation.....	12
Why choose Louth?	13
Partners & Sponsors	14
Pricing Guide.....	15
Contact Info	16



ABOUT US

Louth English was founded in 2019 by Caoimhe O'Hare Siret and her husband Julian Siret. They moved to Ireland from London where they worked and trained for many years in English language and Examinations at International House London. They wanted to bring that experience home to Louth through their school by opening up opportunities for international students and teachers to study, learn and experience what the beautiful East coast has to offer.

At Louth English, Caoimhe and Julian believe in inspiring students to challenge themselves, working with their students and motivating them to succeed. They believe in flexible learning, adapting courses to suit the student's requirements and that everyone has the right to learn and progress themselves.

The school's main goal is to provide a safe, open and inclusive learning environment where students can connect with others from all parts of the world, achieve their study goals and enjoy the Irish culture!



Cambridge Assessment
Admissions Testing



FULL-TIME ENGLISH COURSES

Courses run all year round, 15 or 25 hours per week. Choose a General English course or an Academic course to prepare for your IELTS, OET or Cambridge Exam.

Stay with an Irish host family for total immersion into Irish culture! Join our exciting social programme to explore the rich history and legends of the East coast of Ireland!

Full Time 15 Hours Per Week

Study English in the afternoon from 1:45pm to 5pm including a 15 minute break. All materials are provided and classes are capped at 5 students maximum to ensure social distancing.

Class Details:

Start Date: Every Monday

Course Length: Minimum 2 weeks

Time: Monday to Friday, 1:45pm to 5pm

Course Fees:

1-4 Weeks: €140 per week

4-6 Weeks: €130 per week

6-8 Weeks: €120 per week

8-10 Weeks: €115 per week

10-12 Weeks: €110 per week

FULL-TIME ENGLISH COURSES

Courses run all year round, 15 or 25 hours per week. Choose a General English course or an Academic course to prepare for your IELTS, OET or Cambridge Exam.

Stay with an Irish host family for total immersion into Irish culture! Join our exciting social programme to explore the rich history and legends of the East coast of Ireland!

Full Time 25 Hours Per Week

Study English in the morning from 9:00am to 2:30pm including a 15 minute break. All materials are provided and classes are capped at 5 students maximum to ensure social distancing.

Class Details:

Start Date: Every Monday

Course Length: Minimum 2 weeks

Time: Monday to Friday, 9:00am to 2:30pm

Course Fees:

1-4 Weeks: €180 per week

4-6 Weeks: €160 per week

6-8 Weeks: €150 per week

8-10 Weeks: €145 per week

10-12 Weeks: €140 per week



GENERAL ENGLISH EVENING CLASSES

Course contents include:

- Intercultural communication
- Describing people and places
- Leaving a positive impression
- Exploring your English speaking environment

Class Details:

- **Date** - Tuesdays and Thursdays - Start any Monday
- **Length** - 4 Hours per Week
- **Time** - 6pm to 8pm
- **Venue** - Creative Spark, Dundalk
- **Course Fee** – From €48 per Week

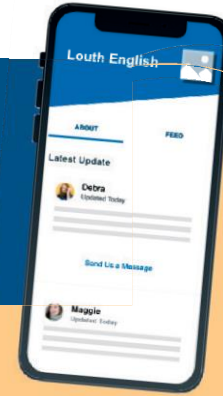
This course focuses on the skills of listening, reading, writing and speaking. It will also concentrate on the accuracy of language, specifically on improving vocabulary, pronunciation and grammar. The topics are related to communicating effectively in a variety of contexts.

ACADEMIC ENGLISH EVENING CLASSES

This course is topic based and includes skills necessary for Further/Higher Education Courses.



Did you know we have an app?
Our app lets our clients book services and classes, get notifications & stay engaged with Louth English



Class Contents Include:

- Needs analysis
- Focus on academic style
- Report writing
- Essay writing
- Delivering effective presentations
- Focus on research and critical thinking

Class Details:

- **Date** - Tuesdays and Thursdays - Start any Monday
- **Length** - 4 Hours per Week
- **Time** - 6pm to 8pm
- **Venue** - Creative Spark, Dundalk
- **Course Fee** – From €48 per Week

BUSINESS ENGLISH EVENING CLASSES



This course is topic based and includes skills necessary for international business communication.

Follow along with us on social media and see what life at Louth English is all about!

 /louthenglish  @louthenglishexams

 @englishlouth  /louth-english

Class Content Include:

- English for negotiation
- English for specific purposes
- Effective email and report writing
- Improving your confidence when speaking in a work context

Class Details:

- **Date** - Tuesdays and Thursdays - Start any Monday
- **Length** - 4 Hours per Week
- **Time** - 6pm to 8pm
- **Venue** - Creative Spark, Dundalk
- **Course Fee** – From €48 per Week

For one-to-one english lessons, we provide tailored classes based on General English or one of our English courses.

Class Details:

- **Date** - Flexible
- **Length** - 1.5hrs /2hrs
- **Time** - Flexible
- **Venue** - Student Home or Other
- **Course Fee** - €40 for 1.5hrs / €50 for 2hrs



ONE-TO-ONE ENGLISH LESSONS

One to One classes include a personalised Louth English programme based on a calculated need's analysis.

You choose how many lessons you will have and on which topics and areas of language you would like to focus, depending on your personal objectives. You may wish to improve your Conversational English, to focus on your Grammatical Accuracy or develop your ability to Read and Write in English.



CAMBRIDGE ASSESSMENT ADMISSIONS TESTING

Depending on your chosen institution and course, you may need to take an admissions test as part of your application (some joint degree courses require you to take two tests).

As well as being an entry requirement, an admissions test gives you the chance to show your potential to succeed in your course.



**Cambridge Assessment
Admissions Testing**

BMAT - Biomedical Admissions Test

The BioMedical Admissions Test (BMAT) is an admissions test for applicants to Medicine, Biomedical Science and Dentistry courses at certain universities. BMAT gives you the chance to stand out from the crowd and show your potential to succeed on medical and health-related courses. It tests your ability to apply scientific and mathematical knowledge, as well as problem solving, critical thinking and written communication skills that are essential to university-level study.

Registration Opens - 1st September to 1st October

Late Registration - 2nd October to 15th October

Test Venue - Louth English, Creative Spark, Dundalk

Test Fee - €215

How to Register

1. Download Application Form - [Download Link](#)
2. Complete Form & Return to info@louthenglish.ie
3. Make Your Payment

CAMBRIDGE ASSESSMENT ADMISSIONS TESTING

Depending on your chosen institution and course, you may need to take an admissions test as part of your application (some joint degree courses require you to take two tests).

As well as being an entry requirement, an admissions test gives you the chance to show your potential to succeed in your course.



**Cambridge Assessment
Admissions Testing**

TMUA - Test of Mathematics for University Admission

The Test of Mathematics for University Admission (TMUA) is designed to give you the opportunity to demonstrate that you have the essential mathematical thinking and reasoning skills needed for a demanding undergraduate Mathematics or Mathematics-related course. As you can decide if you want to share your results with universities or not after you have received them, the test gives you a risk-free opportunity to prove your potential, and in some cases to receive a reduced offer.

Registration Opens - 1st September to 1st October

Late Registration - 2nd October to 15th October

Test Venue - Louth English, Creative Spark, Dundalk

Test Fee - €215

How to Register

1. Download Application Form - [Download Link](#)
2. Complete Form & Return to info@louthenglish.ie
3. Make Your Payment

CAMBRIDGE ASSESSMENT ADMISSIONS TESTING

Depending on your chosen institution and course, you may need to take an admissions test as part of your application (some joint degree courses require you to take two tests).

As well as being an entry requirement, an admissions test gives you the chance to show your potential to succeed in your course.



Cambridge Assessment
Admissions Testing

Cambridge, Oxford and Other Admissions Tests

Cambridge Assessment work with the University of Oxford and University of Cambridge to produce and deliver a range of pre-interview assessments. These assessments are required for a number of undergraduate courses, as part of the application process. For certain courses, you may be required to take more than one test. We recommend you check which test(s) your course requires with your University before booking. For courses currently using the pre-interview assessments please visit our website.

Registration Opens - 1st September to 1st October

Test Venue - Louth English, Creative Spark, Dundalk

Test Fee - €110

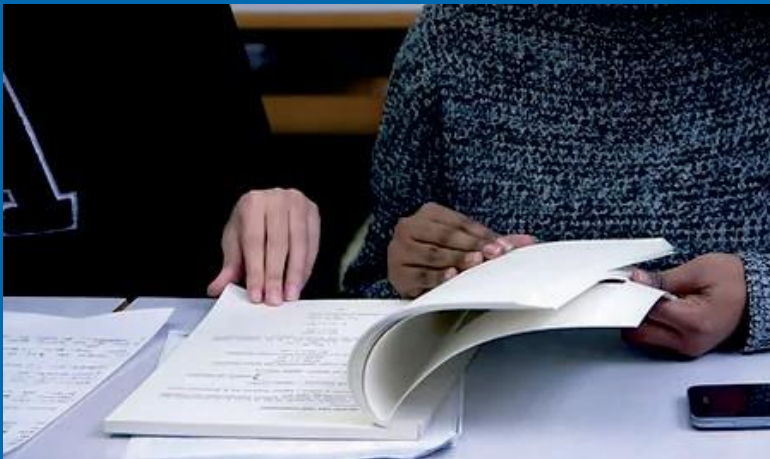
How to Register

1. Download Application Form - [Download Link](#)
2. Complete Form & Return to info@louthenglish.ie
3. Make Your Payment

Improve all 4 modules to
boost your band score!

Class Details:

- **Date** – Fridays and Sundays
- **Time** - 6pm to 8pm
- **Length** – 1.5 hours per lesson
- **Venue** - Online
- **Course Fee** - €45 per week



IELTS PREPARATION COURSE

This IELTS course is to ensure students are fully prepared for their exam. They involve covering key language domains and competencies required for the IELTS examination modules: Listening, Reading, Writing & Speaking.

This programme is intended to improve students' language skills for the IELTS examination and to develop examination techniques to ensure students get the best mark they can. Students will complete regular 'mock' examinations and receive feedback on their performance. Support with exam registration is also provided.

OET PREPARATION COURSE

Course begins every Monday to ensure students are fully prepared for their test. This course aims to help you achieve your highest possible score in the Occupational English Test. It focuses on the strategies and techniques required to maximise your score including practice tests.

Modules Listening, Reading, Writing and Speaking will be focused on within the context of healthcare to help you achieve the score you require. Support with exam registration is also provided.

Improve all 4 modules to
boost your band score!



Class Details:

- **Date** – Tuesdays and Wednesdays
- **Length** - 2 hours per lesson
- **Time** – 8:30am to 11:30am
- **Venue** - Online
- **Course Fee** - €45



WHY CHOOSE LOUTH?



Strategically located approximately midway between the two largest cities in Ireland: Belfast and Dublin

Dundalk is one of the most historical parts of Ireland with Louth known as the 'land of legends'. Rich in heritage, many of the famous Irish legends and epics were based in the wonderful landscape here.

Medieval castles and ruined monasteries, high crosses, dolmens and cairns etc.

Social & Cultural Scene:

Dundalk is known for its vibrant nightlife and great social scene, The Spirit Store being one of Ireland's top music venues

Things To Do:

Blue flag beaches - Templetown

Theatre, Acting Courses

www.aintain.ie/workshops

Carlingford Adventure Centre/ Sky Park

Horse riding Oak Tree Stable

Cooking classes in Carlingford in Ghan house

Renting bikes in Carlingford / On Yer Bike / Greenway

Carlingford Ferry to Greencastle

Marshes shopping Centre

www.carlingfordoysterfestival.com

Soccer, Rugby, GAA

www.dkitsport.ie/sports-dome

Beautiful Golf Club

www.dundalkgolfclub.ie

www.dundalkracketsclub.com

Belfast Titanic Centre

PARTNERS & SPONSORS

TRINITY
COLLEGE LONDON
Registered Exam Centre 69256

Linguaskill 
from **Cambridge**



Cambridge Assessment Admissions Testing



Language
Cert

SELT EXAMINATIONS
REGISTRATION CENTRE



PRICING TABLES

Full Time 15 - (Afternoons) 15 Hours Per Week - 1:45pm to 5pm

Length of Stay	Start Date	Saving Per Week	Price Per Week
1 to 4 Weeks	Every Monday	-	€140
4 to 6 Weeks	Every Monday	€20	€130
6 to 8 Weeks	Every Monday	€30	€120
8 to 10 Weeks	Every Monday	€35	€115
10 to 12 Weeks	Every Monday	€40	€110

Full Time 25 - (Mornings) 25 Hours Per Week – 9am to 2:30pm

Length of Stay	Start Date	Saving Per Week	Price Per Week
1 to 4 Weeks	Every Monday	-	€180
4 to 6 Weeks	Every Monday	€20	€160
6 to 8 Weeks	Every Monday	€30	€150
8 to 10 Weeks	Every Monday	€35	€145
10 to 12 Weeks	Every Monday	€40	€140

Accommodation

Homestay with Irish Family	Price Per Week
Single Room with Breakfast	€180
Single Room with Breakfast and Evening Meals	€200
Twin Room with Breakfast	€140
Twin Room with Breakfast and Evening Meals	€160

PRICING TABLES

General / Business / Academic Evening Classes – 4 Hours Per Week

Class Type	Start Date & Time	Price Per Week
General English	Mondays and Wednesdays, 6pm to 8pm	€48
Business English	Mondays and Wednesdays, 6pm to 8pm	€48
Academic English	Mondays and Wednesdays, 6pm to 8pm	€48

One to One Lessons

Length of Lesson	Start Date	Location	Price Per Lesson
1 ½ Hours	Flexible	Flexible	€40
2 Hours	Flexible	Flexible	€50

Exam Preparation Intensive Evening Classes – 3 to 12 Hours Per Week

Exam	Start Date & Time	Price for 4 Modules	Price for 1 Module
IELTS	Mondays, 6pm to 9pm	€200	€70
OET	Mondays, 6pm to 9pm	€350	€100
Cambridge English	Mondays, 6pm to 9pm	€200	-

Other Fees

Type	Total Price
Course Registration Fee	€50
Medical Insurance - Purchased by Student Prior to Arrival	-

Airport Transfers

Dublin Airport Collection and/or Drop Off	Total Price
One Way - Collection or Drop Off Only	€50
Return - Collection and Drop Off	€90

Important Information: There is an accommodation booking fee of €25. Our accommodation charges are for 7 nights, arriving Sunday and departing on Sunday. Most homestays and residences can be booked for a minimum of one week. You can extend your accommodation after you arrive, rooms are subject to availability, so please speak to our accommodation department. Sometimes we use agencies to help us to find extra accommodation, which will be organised through our team. We can arrange for you to share a room with a friend, provided you book for identical dates and both of you are studying at the school.



Louth English

Contact Us

t +353 85 777 0551

e info@louthenglish.ie

Find Us

Louth English
Creative Spark
Clontygora Court
Dundalk
Co. Louth
A91HF77

Learn More

louthenglish.ie

